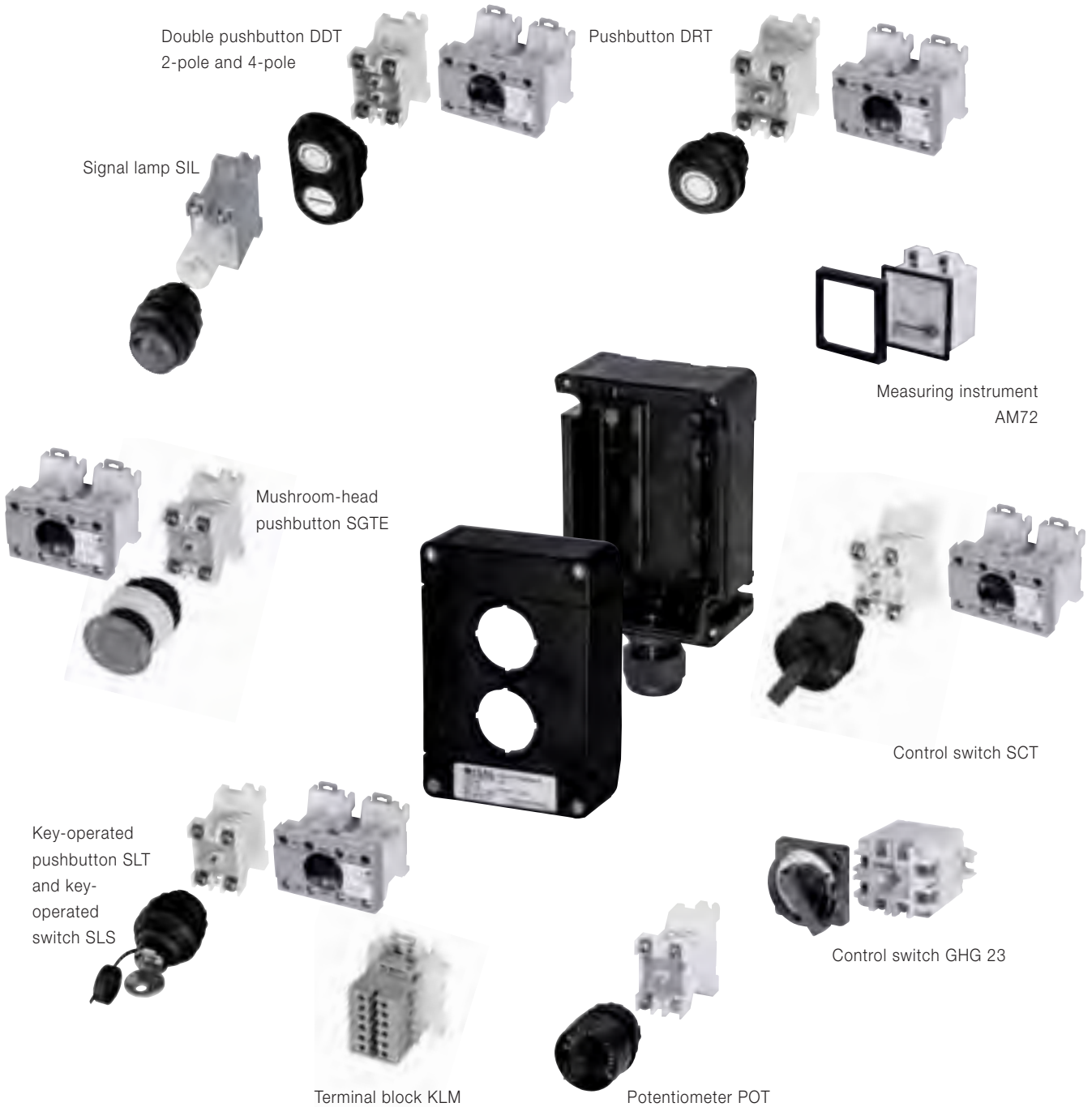


Customised control stations, covered by type examination certificates, can be individually combined from CEAG's numerous built-in components.

ordering. The sum of the code numbers designates a complete control station.

A coding system for these components with unique designations can be used for planning, selection and

For the selection of control units and components, please see page 9.34 pp.



1
2
3
4
5
6
7
8
9
10
11
12

| Order Code for Individual Control Units |

Individual control units can be defined by 4 groups of components:

1. Empty Enclosure
2. Components per mounting area
3. Accessories
4. Cable glands

Code 1: Empty Enclosure

		Code for enclosure							
MA		①							411 81
MA		①	②						411 82
MA		①	②	③					411 83
MA		①	②						432
MA		①	②	③	④				434
MA		①	②						414 81
MA		①	②	③	④				414 82
MA		①	②						413 84
MA		①	②	③	④				413 85

Code 2: Components per mounting area (max. 4)

A	C	D(1)	(D2)	E	F	Mounting area 1
<input type="text"/>	<input type="text"/>	<input type="text"/>	<input type="text"/>	<input type="text"/>	<input type="text"/>	MA1
A	C	D(1)	(D2)	E	F	Mounting area 2
<input type="text"/>	<input type="text"/>	<input type="text"/>	<input type="text"/>	<input type="text"/>	<input type="text"/>	MA2
A	C	D(1)	(D2)	E	F	Mounting area 3
<input type="text"/>	<input type="text"/>	<input type="text"/>	<input type="text"/>	<input type="text"/>	<input type="text"/>	MA3
A	C	D(1)	(D2)	E	F	Mounting area 4
<input type="text"/>	<input type="text"/>	<input type="text"/>	<input type="text"/>	<input type="text"/>	<input type="text"/>	MA4

Pushbutton DRT 2-pole	4-pole	Signal lamp SIL
Double-pushbutton DDT 2-pole	4-pole	Potentiometer POT
Key-operated pushbutton SLT 2-pole	4-pole	Control switch Ex 23
Key-operated switch SLS 2-pole	4-pole	Measuring instrument AM 45
Mushroom-head pushbutton SGTE	SGT	Terminal block KLM

Example: Enclosure Type 434,
 Pushbutton (MA4),
 Signal lamp (MA3)
 Emergency stop
 Mushroom head pushbutton (MA2)
 Double pushbutton (MA1)

Code 1: 434..
 Code 2 MA4: DRT 14 001
 Code 2 MA3: SIL 1 10
 Code 2 MA2 SGTE 13 1 1 2
 Code 2 MA1: DDT15 001 007

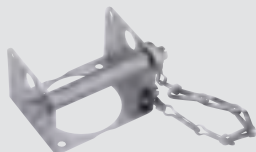
Code 3 MA1: ZUB 19
 Code 3 MA2: ZUB 19
 Code 3 MA3: ZUB 02
 Code 3 MA4: --
 Code 4: GEH 1 GK M25 2

Code 3: Labels and locking facilities

A	B	C	Mounting area 1 MA1
<input type="text"/>	<input type="text"/>	<input type="text"/>	
A	B	C	Mounting area 2 MA2
<input type="text"/>	<input type="text"/>	<input type="text"/>	
A	B	C	Mounting area 3 MA3
<input type="text"/>	<input type="text"/>	<input type="text"/>	
A	B	C	Mounting area 4 MA4
<input type="text"/>	<input type="text"/>	<input type="text"/>	



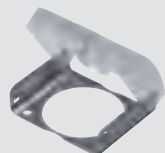
Label with holder
ZUB 20



locking facility
ZUB 14



locking facility with hammer
ZUB 05



locking facility
ZUB 22



locking facility double pushbutton
ZUB 17

Code 4: Cable entries and flanges

A	B	C	D	E
<input type="text"/>	<input type="text"/>	<input type="text"/>	<input type="text"/>	<input type="text"/>



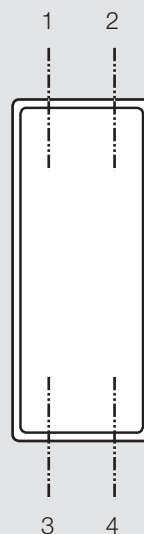
Metal flange plate
FLM



plastic cable gland
GK

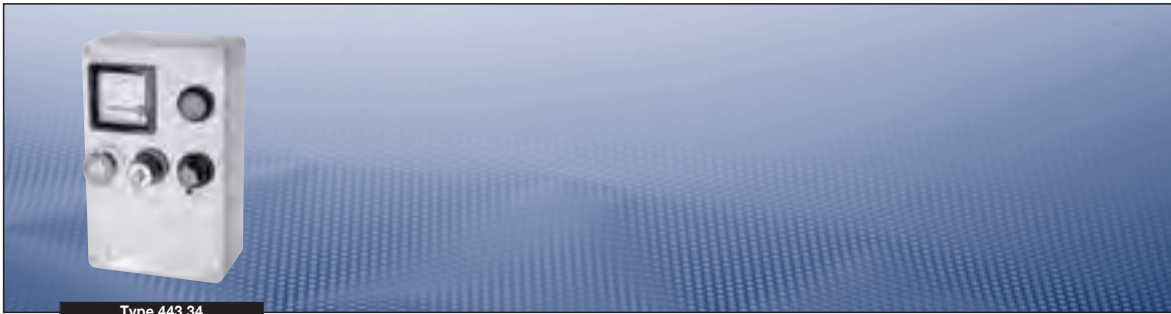


plastic trumpet-shaped
cable gland TR



position for
drilling/gland

Ex-control stations



Type 443 34

Technical data

Ex-Control stations Type 443 34 for individual configuration

Marking to 94/9/EC	II 2 G Ex ed ia/lb m IIC T6 II 2 D Ex tD A21 IP66 T80 °C
EC-Type Examination Certificate	PTB 01 ATEX 1115
Permissible ambient temperature	-20 °C to +40 °C -55 °C to +55 °C (option)
Rated voltage	690 V AC
Rated current	63 A
Connecting terminals	as ordered accd. to manufacturer's specification
PE-connection terminals	2 x 4 mm ²
Insulation class	I
Degree of protection accd. EN 60529	IP66 (standard)
Cable glands/Gland plates/Enclosure drilling	as ordered accd. to manufacturer's specification
Dimensions (L x W x H)	280 x 180 x 90 mm
Weight	2.3 kg with mounting framework
Enclosure material	cast aluminium-silicon (AlSi)
Enclosure colour	grey RAL 7031
Mounting arrangements	max. 9 mounting areas

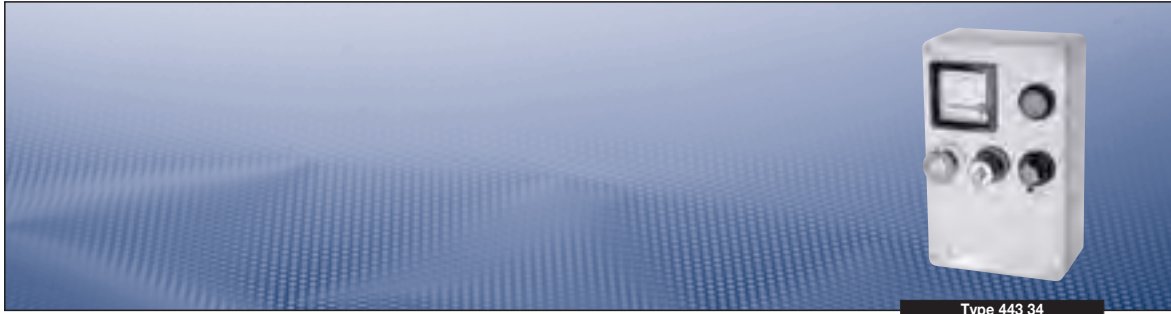
Ordering codes (Code 1)

1. Empty enclosure	2. Components arrangement/Terminals			3. Labels/Locking devices	4. Cable glands
	Mounting area 1 ... 3	Mounting area 4 ... 6	Mounting area 7 ... 9		
443 34	X	X	X	X	X

Possible components (Code 1)

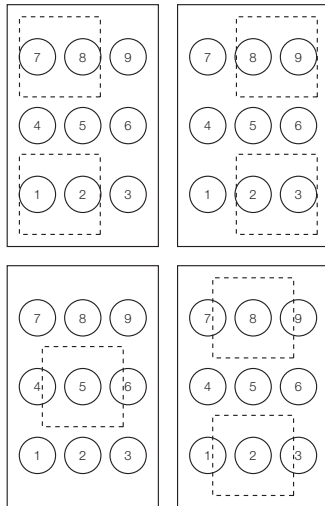
Component	Code	Component	Code
Pushbutton (2-pole or 4-pole ¹⁾)	DRT	Measuring instrument	AM72 ¹⁾
Double pushbutton (2-pole or 4-pole ¹⁾)	DDT	Measuring instrument	AM45
Key-operated pushbutton (2-pole or 4-pole ¹⁾)	SLT	Blanking element	BLV
Key switch (2-pole or 4-pole ¹⁾)	SLS	Control switch	GHG 23 ¹⁾
Mushroom-head pushbutton (2-pole or 4-pole ¹⁾)	SGT	Control switch	GHG 29 ¹⁾
Control switch (2-pole or 4-pole ¹⁾)	SCT	Terminal (4 mm ²)	KLM ... A ¹⁾
Signal lamp	SIL	Terminal block (4 mm ²)	KLM ... B ¹⁾
Potentiometer	POT		

¹⁾ 2 mounting areas are needed

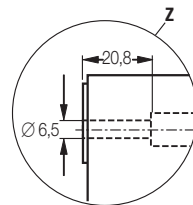
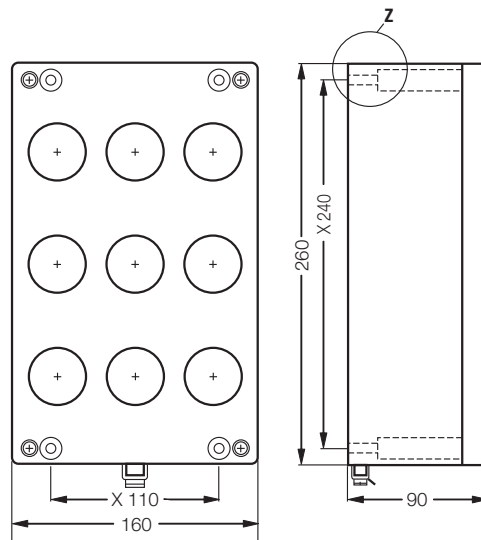


Type 443 34

Mounting areas | Dimension drawing



Distance between centres 40, 50 and 60 mm for positioning of built-in components



Type 443 34

X = fixing dimension

Dimensions in mm

- 1
- 2
- 3
- 4
- 5
- 6
- 7
- 8
- 9
- 10
- 11
- 12