

# Ex-Portable Emergency Light with Emergency Lighting Function SEB 8 ... SEB 9



IP65



SEB 8 L



SEB 8 with vehicle holder 90



SEB 9



Charging unit LG 443

- Explosion protected handheld torch with emergency lighting function and built-in charging unit
- Housing of impact-resistant, non-abrasive polyamide
- EU construction test certificate for explosion protection for gas and dust areas (ATEX certification according to latest explosion protection standards)
- DIN 14642 for explosion-proof hand projector with car bracket, version 9/2003, for equipping of cars and fire brigades
- EU type approval from the German Federal Department of Motor Vehicles, for compliance with EMC directive 2009/19/EG for use in vehicles (e1 certificate)
- Shock testing according to DIN EN 60068-2-27 for use of the luminaires in fire brigade vehicles (DIN 1846-2:2001) including Kfz 90 motor vehicle loaders
- Microprocessor-controlled operational duration display
- Charge depending on drawn capacity
- Flashing light and emergency lighting function
- Emergency light
- Filament break and reserve light switching
- Internal charger (SEB 8L, SEB 9L)
- SEB 9/9L environmentally-friendly NiMH battery with large capacity and service life
- Function and capacity indication via LED chain
- Adjustable reflector: can be focused from point to wide light, including clear prismatic C-washer

Ignition protection type	Ex e ib IIC T4 II 2 D Ex tD A21 IP66 T85 °C
EU-type inspection certificate	BVS 08 ATEX E 116
Marking	II 2 G /  II 2 D*
Housing material	Polyamid / black
Light emission	Ø 98 mm mineral glass
Light source	5.5 V / 5.5 W halogen lamp with double bulb 4.8 V / 0.3 A pilot beam
Max. luminous intensity	15000 cd
Luminous flux	approx. 100 lm
Permissible ambient temperature	-20 °C to +40 °C (specified data 0-30 °C)
Battery	SEB 8 NC-Accu 4.8 V/7 Ah SEB 9 NiMH-Accu 4.8 V/9.8 Ah
Rated operating time (main light)	SEB 8 approx. 5.5 h SEB 9 approx. 7 h
Weight	SEB 8 L 2.5 kg / SEB 8 2.2 kg
Connection voltage charging unit LG 443	220-250 V, 50/60 Hz
Connection voltage vehicle holder 90	10-33 V DC
Connection voltage built-in charging module SEB 8 L / SEB 9 L	230 V; 50/60 Hz

## Ordering details

Type	Battery	Order No.
SEB 8 L*	with tungsten halogen lamp with double bulb, incandescent lamp, diffusion lens and battery (rechargeable by means of mains connecting lead, LG 443 or vehicle holder 90)	1 1147 000 001
SEB 8*	with tungsten halogen lamp with double bulb, incandescent lamp, diffusion lens and battery (rechargeable with LG 443 or vehicle holder 90)	1 1147 000 002
SEB 9 L	with tungsten halogen lamp with double bulb, incandescent lamp, diffusion lens and battery (rechargeable by means of mains connecting lead, LG 443 or vehicle holder 90)	1 1147 009 001
SEB 9	with tungsten halogen lamp with double bulb, incandescent lamp, diffusion lens and battery (rechargeable with LG 443 or vehicle holder 90)	1 1147 009 002

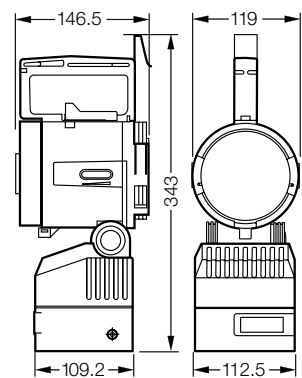
\* phase out in 2010

# Ex-Portable Emergency Light with Emergency Lighting Function SEB 8 ... SEB 9

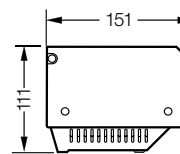
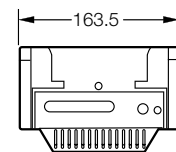
## Accessories/spare parts

Type		Order No.
Charging unit LG 443	SEB 8 L, SEB 8, SEB 9 L, SEB 9	1 1540 000 443
Vehicle holder 90	SEB 8 L, SEB 8, SEB 9 L, SEB 9	1 1145 000 792
Wall bracket SW	without charging unit	1 1145 000 795
Battery set 7 Ah, 4.8 V NC for SEB 8 L, SEB 8		2 1147 701 000
Battery set 9.5 Ah, 4.8 NiMh for SEB 9 L, SEB 9		2 1147 791 000
Halogen lamp with double bulb 5.5 V/5.5 W		1 2061 000 040
10 incandescent lamp 4.8 V/0.3 A		2 2041 450 000
Radial diffuser cap, orange		2 1145 017 000
Slip-on filter set red, orange, green		2 1147 300 000

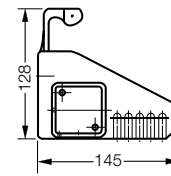
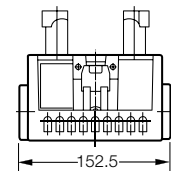
Dimensions in mm



SEB 8 L, SEB 8, SEB 9 L, SEB 9



Charging unit LG 443



Vehicle holder 90

