

6442100 **DINAMIC CL 2X28/54W LOW**



**Description:**

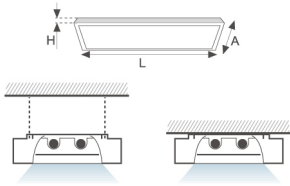
Standard direct radiation surface luminaire DINAMIC LAMP brand. Made of matt silver anodised aluminium extrusion. With high visual comfort optics. With multi-power electronic control gear. For 2 T5 28/54W.

**Finish:** Anodized matte silver

**Dimensions:** 1.245 x 212 x 57,5 mm

**Weight** 6.038 g

**Installation:** Surface



**Lamp:**

Power	Frequency	Lampholder	Lamp	NºLEDs-model	° K	CRI
2X28/54W	230V-50HZ	G5	T5/T16			

**Gear:**

**Type:** Electronic

**Ignitions:** 1

**Plum:** 63W/115W

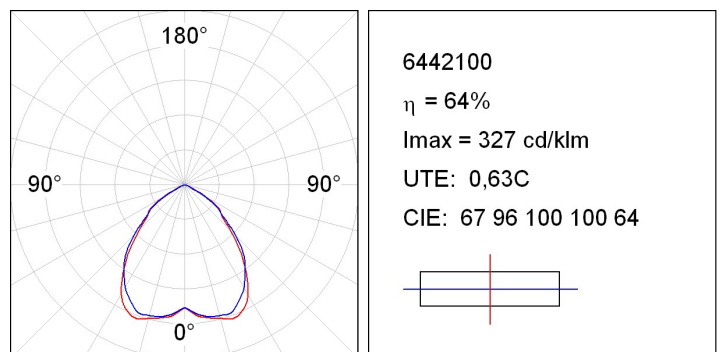
**Technical features:**



**Quality certificates:**



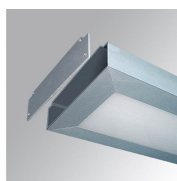
**Photometrical data:**



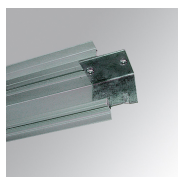
**Assembly**



**Product code:** 6405203  
**Description:** DINAMIC 90° ELBOW



**Product code:** 6406403  
**Description:** DINAMIC LUM. CL END COVER



**Product code:** 6407000  
**Description:** INTERMEDIATE JOINT DINAMIC CL LUM.

**Suspension**



**Product code:** 9601313  
**Description:** STEEL CABLE SUSPENSION 1000mm  
9601343 STEEL CABLE SUSPENSION 4000mm



**Product code:** 9608653  
**Description:** 3000mm ADJUSTABLE "Y" DINAMIC SUSPENSION



**Product code:** 9621310  
**Description:** WHITE ELECROMECANICAL SUSP. 1M  
9621340 WHITE ELECROMECANICAL SUSP. 4M



**Product code:** 9628650  
**Description:** SUSP. ADJUST. "Y" FOR DINAMIC WHITE

**Product code: Description:**

9628653 SUSP. ADJUST. "Y" FOR DINAMIC GREY

---

**Support****Product code: Description:**

4806073 TYPE A LUMINAIRE FIXING BRACKET

