

# LED-Self-Contained Luminaire

## Style Variant 28011 LED CGLine

32 m

DIN 4844

LED



IP41

CG Line

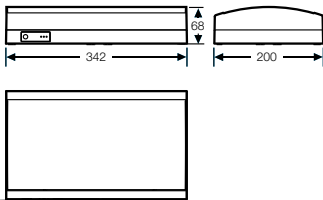
850°C

- Self-monitoring LED self-contained luminaire for stand-alone operation or for connection to the central monitoring device CG Controller CGLine 400 or PC-Interface
- Selectable operating time: 1 h or 3 h
- Minimum service requirement due to high service life of the LEDs (50,000 hours)
- Brightness selectable in 3 steps
- Test results with fault analysis (LED, charging and battery circuit) as well as status display (operation, function test, duration test) via 3 coloured LEDs
- Automatic function test (weekly) and duration test (every 3 months)
- Manual function test or operational duration test via testing buttons
- Automatic charging monitoring and deep discharge protection with restart inhibit
- 1 minute delay of normal mode after mains returns (acc. to DIN VDE 0100-718)
- Blocking function with CG Controller CGLine 400 or PC interface in times of shut-down
- Luminaires are generally suitable for maintained or non-maintained mode



28011 LED CGLine  
with cover PL

Dimensions in mm



Viewing distance	32 m
Luminous flux $\Phi_E/\Phi_N$ at the end of rated operating time	50 % 1 h 20 % 3 h
Housing material	Polycarbonate (850 °C glow wire resistant)
Housing colour	Light grey, sim. RAL 7035
Weight	1.2 kg
Type of mounting	Wall and ceiling mounting
Connection terminals	Mains connection 3 x 2.5 mm <sup>2</sup> / Bus connection 2 x 1.5 mm <sup>2</sup>
Connection voltage	230 V AC, 50 Hz
Power consumption mains operation	6.4 VA
Permissible ambient temperature	Maintained mode -5 °C to +30 °C Non-maintained mode 0 °C to +35 °C
Battery	maintenance free and gas tight NiMh 4.8 V / 1.1 Ah
Light source	3 x HighPower LEDs

### Ordering details

Type	Scope of supply		Order No.
Escape sign luminaire 28011 1-3/D LED CGLine	single-sided, without cover		4 0071 352 221
Cover PL acc. to DIN 4844	Cover with silkscreened pictogram		4 0071 349 320
Cover PR acc. to DIN 4844	Cover with silkscreened pictogram		4 0071 349 321
Cover PU acc. to DIN 4844	Cover with silkscreened pictogram		4 0071 349 323
Cover PL	Cover with silkscreened pictogram		4 0071 348 011
Cover PR	Cover with silkscreened pictogram		4 0071 348 012
Cover PU	Cover with silkscreened pictogram		4 0071 348 013

### Ordering details

Type	Order No.
Wire guard	4 0071 348 370

# LED-Self-Contained Luminaire Style Variant 28021 LED CGLine



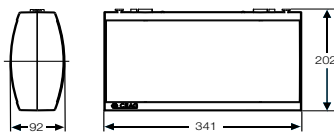
- Self-monitoring LED self-contained luminaire for stand-alone operation or for connection to the central monitoring device CG Controller CGLine 400 or PC-Interface
- Selectable operating time: 1 h or 3 h
- Minimum service requirement due to high service life of the LEDs (50,000 hours)
- Brightness selectable in 3 steps
- Test results with fault analysis (LED, charging and battery circuit) as well as status display (operation, function test, duration test) via 3 coloured LEDs
- Automatic function test (weekly) and duration test (every 3 months)
- Manual function test or operational duration test via testing buttons
- Automatic charging monitoring and deep discharge protection with restart inhibit
- 1 minute delay of normal mode after mains returns (acc. to DIN VDE 0100-718)
- Blocking function with CG Controller CGLine 400 or PC interface in times of shut-down
- Luminaires are generally suitable for maintained or non-maintained mode



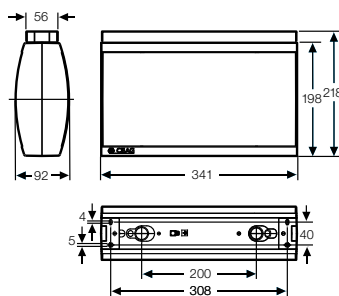
28021 LED CGLine  
with cover PU

Viewing distance	32 m
Luminous flux $\Phi_E/\Phi_N$ at the end of rated operating time	50 % 1 h 20 % 3 h
Housing material	Polycarbonate (850 °C glow wire resistant)
Housing colour	Light grey, sim. RAL 7035
Weight	1.2 kg
Type of mounting	Wall and ceiling mounting
Connection terminals	Mains connection 3 x 2.5 mm <sup>2</sup> / Bus connection 2 x 1.5 mm <sup>2</sup>
Connection voltage	230 V AC, 50 Hz
Power consumption mains operation	11.0 VA
Permissible ambient temperature	Maintained mode -5 °C to +30 °C Non-maintained mode 0 °C to +35 °C
Battery	maintenance free and gas tight NiMh 4.8 V / 1.1 Ah
Light source	4 x HighPower LEDs

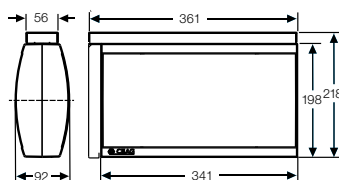
Dimensions in mm



28021 LED CGLine



28021 LED CGLine  
with ceiling mounting



28021 LED CGLine  
with wall bracket

### Ordering details

Type	Scope of supply	Order No.
Escape sign luminaire 28021 1-3/D LED CGLine	double-sided, without cover	4 0071 352 223
Cover PL acc. to DIN 4844	Cover with silkscreened pictogram	4 0071 349 320
Cover PR acc. to DIN 4844	Cover with silkscreened pictogram	4 0071 349 321
Cover PU acc. to DIN 4844	Cover with silkscreened pictogram	4 0071 349 323
Cover PL	Cover with silkscreened pictogram	4 0071 348 011
Cover PR	Cover with silkscreened pictogram	4 0071 348 012
Cover PU	Cover with silkscreened pictogram	4 0071 348 013

\* Each luminaire requires 2 covers.

### Accessories

Type	Scope of supply	Order No.
Ceiling mounting		4 0071 350 432
Suspension set 0.5 m <sup>1)</sup>	with canopy	4 0071 350 400
Chain fastening <sup>1)</sup>		4 0071 351 158
Wall bracket		4 0071 350 418

<sup>1)</sup> Ceiling mounting 4 0071 350 432 required